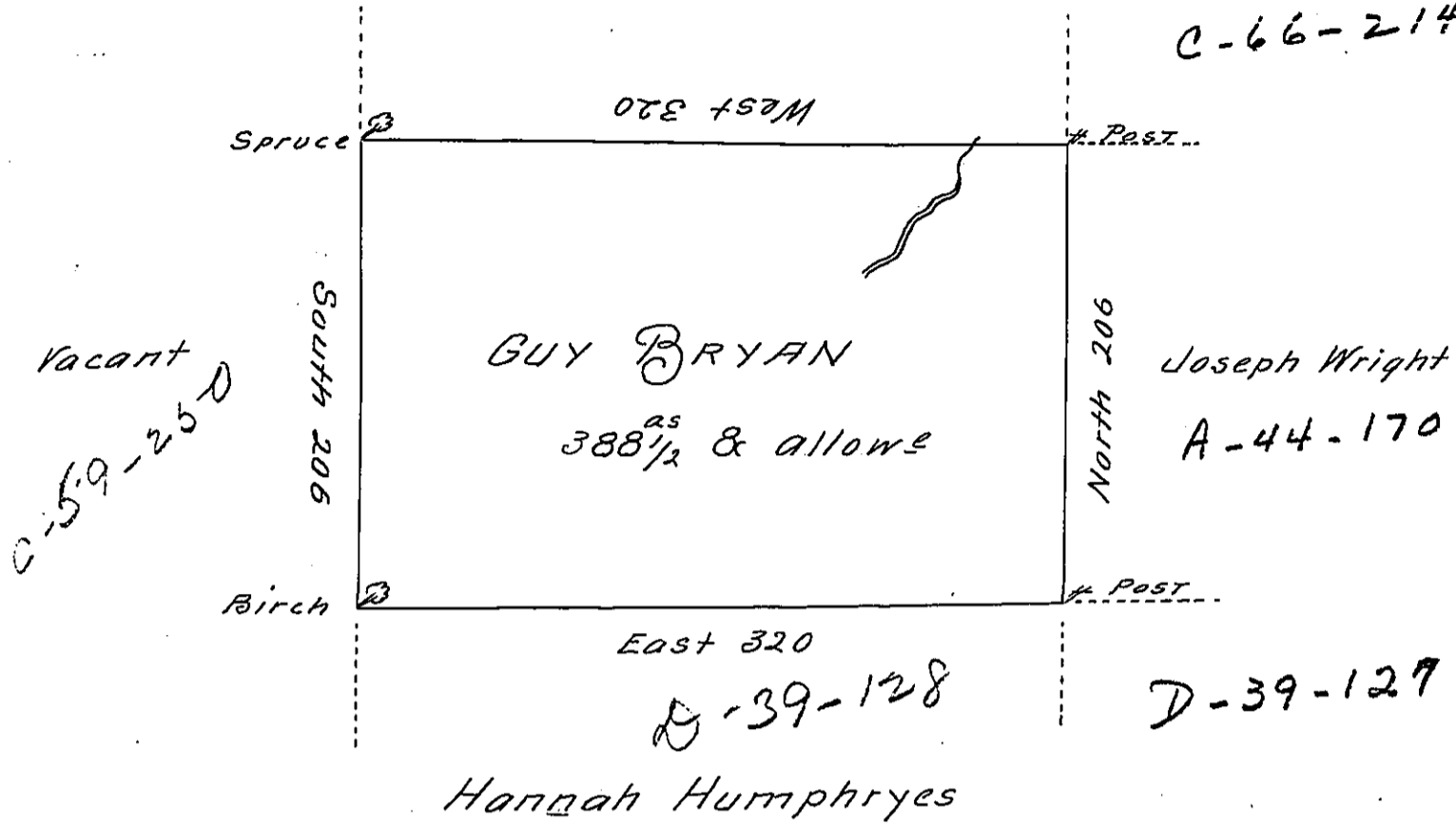


L-3709

W^m Kinley

C-66-214



A Draught of a tract of land Called— Situate on the Waters of Wyolusing Creek Joining land surr^d for W^m Kinley & others in Luzern (formerly Northumb.^d) County containing three hundred & Eighty Eight acres $\frac{1}{2}$ & Allowance of Six P. Cent for roads &c. Surveyed the 28th Day of August 1787 for Guy Bryan in pursuance of a Warrant Dated the 27th Day of July 1787

by

W^m Gray D.S.

To John Lukens Esq.^r

Surv.^d Genl.

IN TESTIMONY that the above is a copy of the original remaining on file in the Department of Internal Affairs of Pennsylvania, made conformably to an Act of Assembly approved the 16th day of February, 1833, I have hereunto set my Hand and caused the Seal of said Department to be affixed at Harrisburg, this eighth day of February 1904

James D. Brown
Secretary of Internal Affairs.